

# THE SELF-SUFFICIENCY STANDARD FOR WYOMING 2020 AT A GLANCE

## HOW MUCH IS ENOUGH IN WYOMING?

### THE SELF-SUFFICIENCY STANDARD DEFINED

The Self-Sufficiency Standard calculates how much income families of various sizes and compositions need to make ends meet at a minimally adequate level without *public or private assistance*.

### HOUSING, CHILD CARE, AND FOOD ACCOUNT FOR NEARLY TWO-THIRDS OF EXPENSES



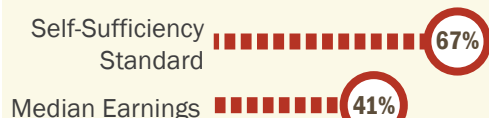
2 Adults +  
1 Preschooler +  
1 Infant

#### Sweetwater County

Housing = \$845  
Child Care = \$1,418  
Food = \$729  
Transportation = \$530  
Health Care = \$588  
Miscellaneous = \$411  
Taxes (Net) = \$244

### THE MEDIAN WAGE HAS NOT KEPT UP WITH INCREASES IN THE COST OF LIVING

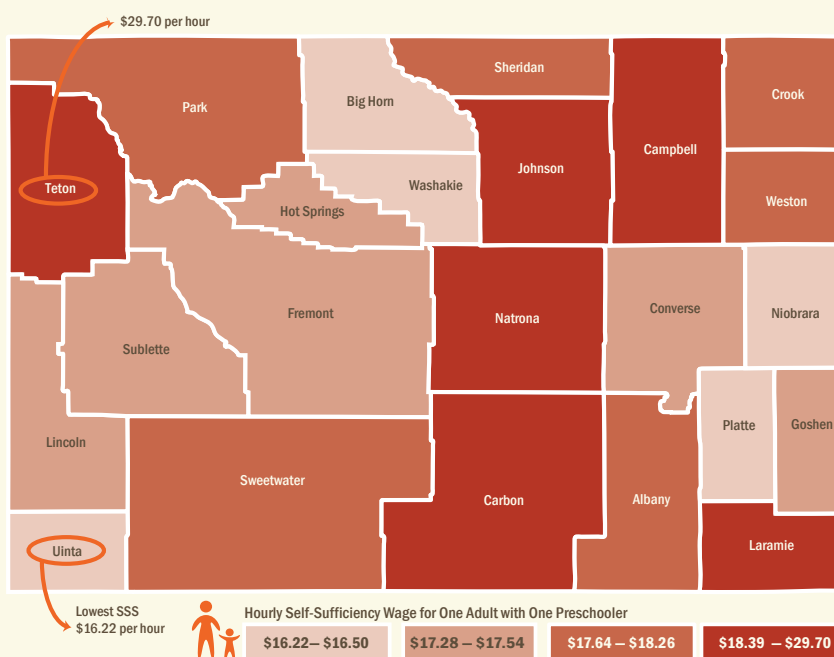
#### Average Statewide Percentage Change (2005-2020)



2 Adults +  
1 Preschooler +  
1 School-age



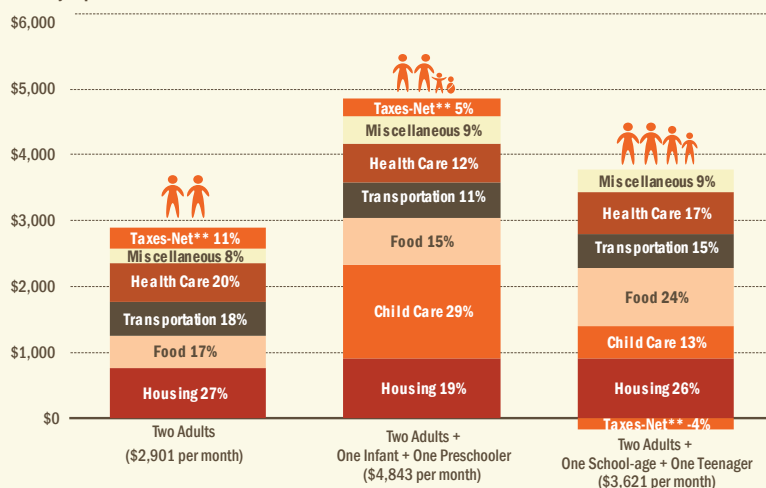
### HOURLY WAGE TO BE SELF-SUFFICIENT VARIES BY COUNTY



### MONTHLY WAGE TO BE SELF-SUFFICIENT VARIES BY FAMILY TYPE

Natrona County, WY 2020

#### Monthly Expenses



\* While the column heights are different to represent the different totals, the percentages for each cost add up to 100% for each column.  
\*\* The two-adult family is not eligible for any tax credits and therefore the taxes-net is the same as gross taxes owed.  
The actual percentage of income needed for taxes without the inclusion of tax credits is 13% for two adults with one infant and one preschooler and 10% for two adults with one school-age child and one teenager. However, as the Standard includes tax credits, the amount owed in taxes is reduced.

## SELF-SUFFICIENCY IN YOUR COUNTY

What does it take to be self-sufficient? The Self-Sufficiency Standard is the wage at which a family can meet its **basic needs** without any public or private assistance.

*Test yourself by estimating the monthly cost for one parent with one infant and one preschooler to live in your county.*

### EXPENSES

Housing (rent for 2 bedroom apartment and utilities) \_\_\_\_\_

Child Care (infant, preschooler) \_\_\_\_\_

Food (USDA Low-Cost Food Plan) \_\_\_\_\_

Transportation (private) \_\_\_\_\_

Healthcare (monthly premium, out-of-pocket costs) \_\_\_\_\_

Miscellaneous  
(telephone, cable, diapers, clothing, non-prescription medications, etc.) \_\_\_\_\_

Taxes \_\_\_\_\_

Earned Income Tax Credit (-) \_\_\_\_\_

Child Care Tax Credit (-) \_\_\_\_\_

Child Tax Credit (-) \_\_\_\_\_

YOUR ESTIMATE OF TOTAL MONTHLY BASIC NEEDS \_\_\_\_\_

ACTUAL TOTAL MONTHLY BASIC NEEDS FROM [wywf.org](http://wywf.org) \_\_\_\_\_

*Visit [wywf.org](http://wywf.org) to calculate the estimated cost for this family to live in your county.*



1472 N. 5th St., Ste. 201

Laramie, WY 82072

307-721-8300

[www.wywf.org](http://www.wywf.org)